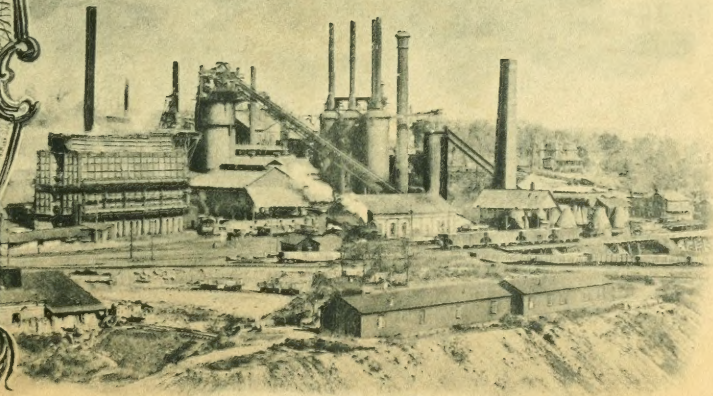
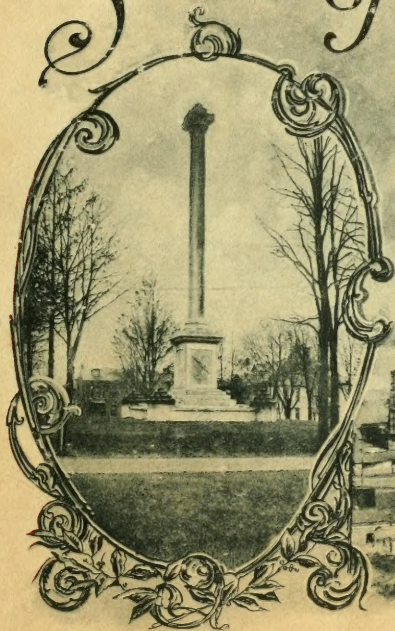


F 159  
.L45 S7  
Copy 1

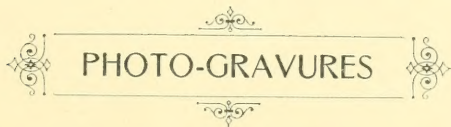
Souvenir  
of  
LEBANON,  
PA.





SOUVENIR OF...

...LEBANON, PA...



FROM PHOTOS BY L. G. HARPEL.



THE ALBERTYPE CO.,  
BROOKLYN, N. Y.

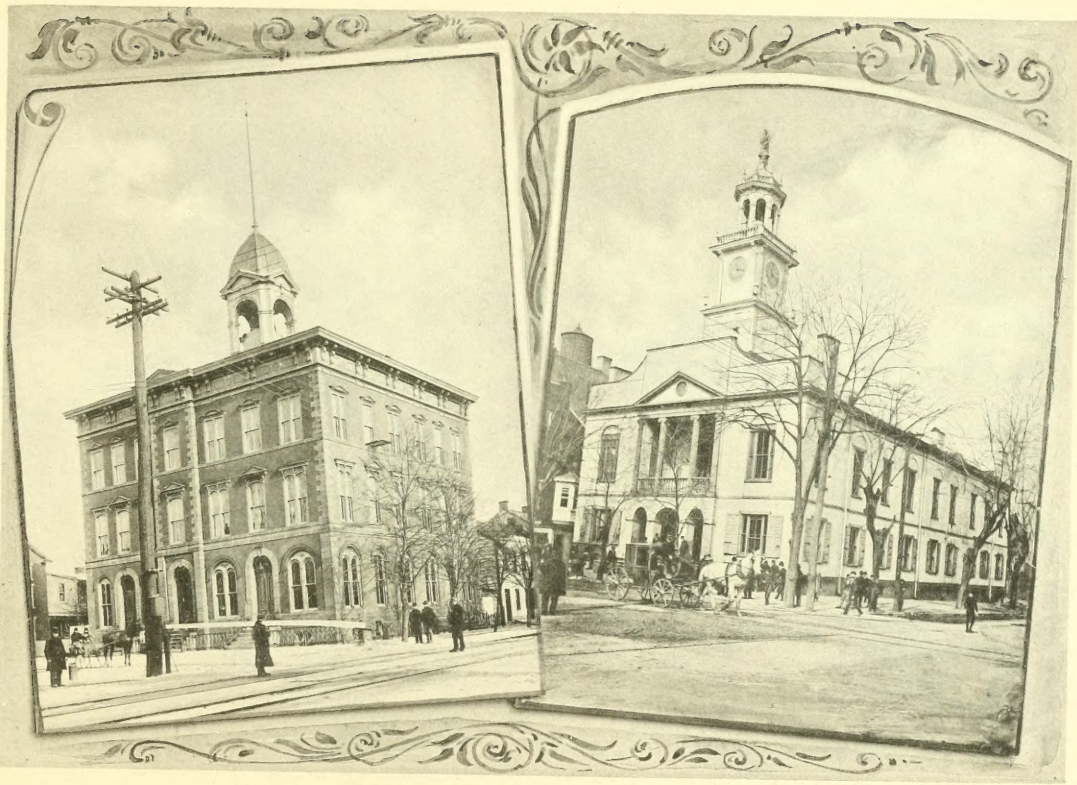
PUBLISHED AND COPYRIGHTED, 1905, BY  
L. G. HARPEL, KODAKS, CAMERA SUPPLIES,  
PICTURES AND PICTURE FRAMES,  
8TH & WILLOW STS.—38 & 40 NO. 8TH ST.,  
LEBANON, PA.

F159  
L45S7

LIBRARY OF CONGRESS  
Two Copies Received  
APR 12 1905  
Copyright Entry  
*Apr. 12. 1905*  
CLASS a XXc No:  
*114008*  
COPY B.

cc  
cc  
cc  
cc  
cc

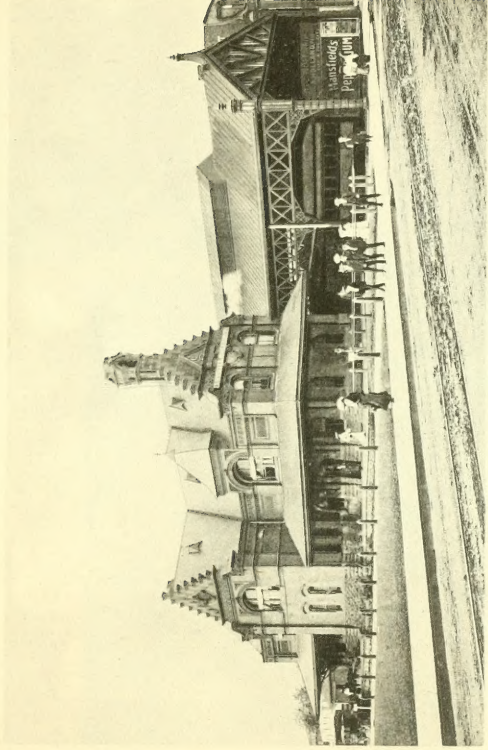
0.33 April 14, 1902



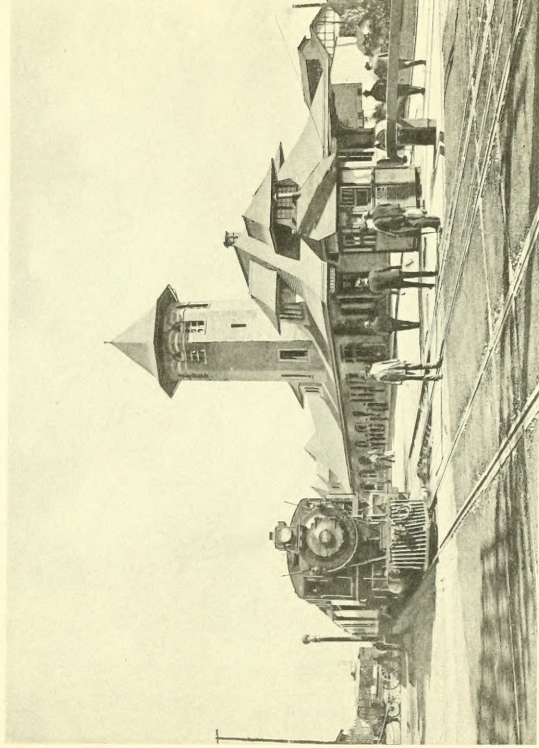
CITY HALL.

COURT HOUSE.





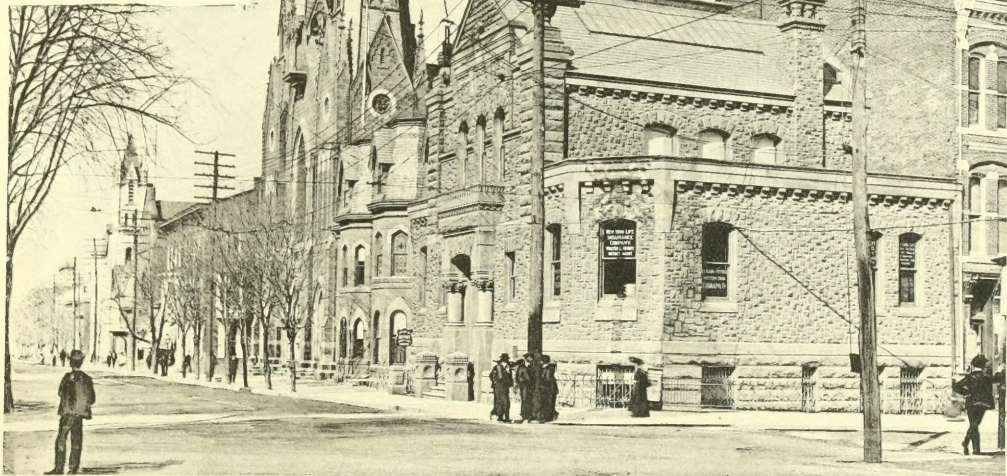
CORNWALL AND LEBANON R. R. DEPOT (PENNA. LINES)



PHILADELPHIA AND READING DEPOT.







INTERIOR.

ST. MARY'S CATHOLIC CHURCH.

PEOPLES BANK BUILDING.

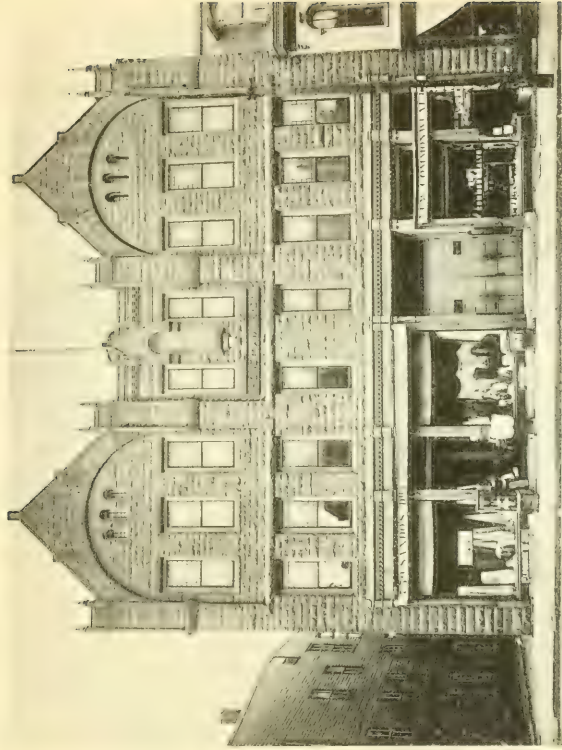
8TH AND CUMBERLAND STREETS, LOOKING NORTH.



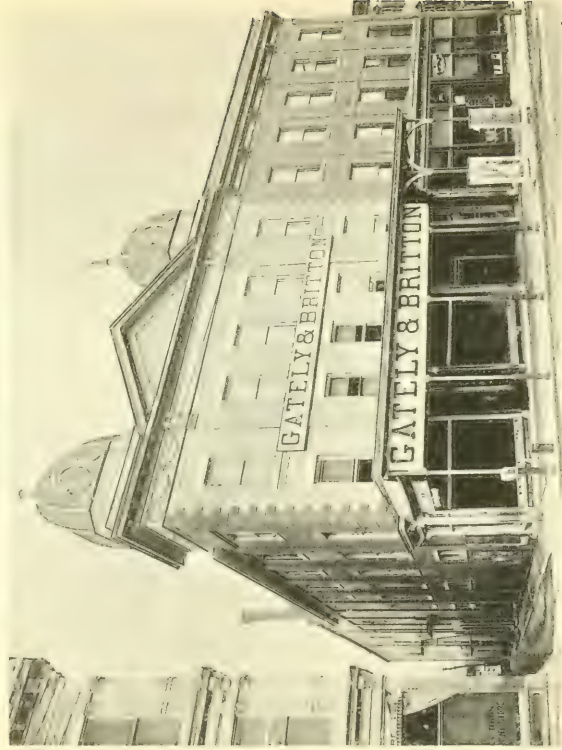


CUMBERLAND STREET, WEST FROM 8TH STREET.





SONS OF AMERICA HALL.



OPERA HOUSE.





SCHOOLS.







LEBANON NATIONAL BANK.

EAGLE HOTEL.

9TH AND CUMBERLAND STREETS, LOOKING EAST.





GOOD SAMARITAN HOSPITAL.

NURSES' HOME.





RESIDENCES.





ST. LUKE'S P. E. CHURCH AND RECTORY.







FIRST  
REFORMED



ST. MARK'S REFORMED



ZION  
LUTHERAN

CHURCHES.





ST. JAMES LUTHERAN



ST. JOHN'S REFORMED



SALEM LUTHERAN CHAPEL



SEVENTH STREET LUTHERAN



CHRIST PRESBYTERIAN



TRINITY LUTHERAN

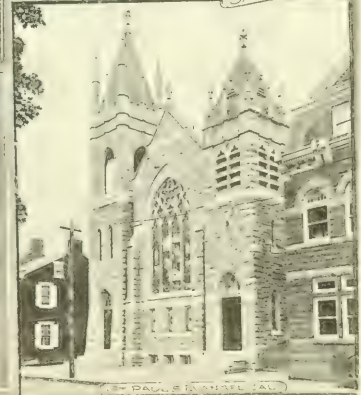
CHURCHES.





OLDEST TUNNEL IN THE UNITED STATES, BUILT 1825 FOR UNION CANAL—730 FEET LONG.





CHURCHES.







NUTTING BUILDING.

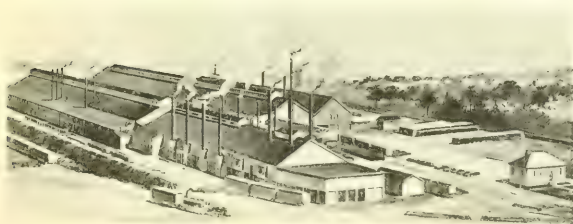


KRAUSE BUILDINGS.  
5TH STREET MARKET HOUSE.





CENTRAL WORKS.



EAST WORKS.



WEST WORKS.

AMERICAN IRON AND STEEL MFG. CO'S PLANT.



PENNA. STEEL CO. N. LEBANON FURNACES



PANORAMA OF LEBANON, PA.





PANORAMA OF LEBANON, PA.







PR 12 1905

LIBRARY OF CONGRESS



0 014 365 203 8

